

Automatic Clamping Paint Shaker YJ-2S-02

Working video: https://youtu.be/yk_ERpot0e4

BRIEF INTRODUCTION

The shaker YJ-2S-02 only need few steps necessary to start working, which is extremely appreciated by the operators. It is able to select the correct parameters to optimize clamping force, shaking time for you.

While operating, the shaker surprises for its silence, the design of the frame contribute to absorbing the bothering noises .



FEATURES

Satisfied mixing effect

- Automatic clamping
- Low noise during shaking
- Fastly and thoroughly mix by high speed vibration

Friendly Operation

- Optional shaking time between 1 - 9 mins.
- Adjustable clamping force for different sizes of can.
- Chinese and English user interface for option.
- The LCD display is easier to read for the operator and clearly shows each phase of the shaking process.
- Simple electrical structure, easy to maintain
- Wheels and feet at bottom, convenient to move the shaker.

Safty

- Electric-magnetic lock, keep the door closed during mixing.
- Shaking structure separate with the case, will not affect the case when high speed shaking.

TECHNICAL DATA

BASE FEATURES**	
Type	Vibrational shaker
Clamping function	Automatic
Clamping force	Adjustable
Shaking time	1 to 9 minutes
Shaking speed	Up to 710 shakes per minute
CAN SPECS**	
Type of cans	Round / Square / Oval
Suitable can height	80-380mm
Maximum can diameter	350mm
Multiple can handling	Yes (The can must be the same height)
Maximum weight	35 KG
POWER SUPPLY / MACHINE ENVIRONMENT**	
Power supply -- Frequency	Single phase 110 /220 V $\pm 10\%$ -- 50/60 HZ
Rated power	750 W
DIMENSIONS **	
Machine Size	720 (L) X 710(W) X 1045(H) MM
Packing Size	760 (L) X 740(W) X 1160(H) MM
Footprint	0,57 m2
WEIGHT **	
Machine Weight	206 KG
Gross Weight	224 KG
LOADING QUANTITY **	42 sets / 20" Container
PACKING **	Carton
CERTIFICATE**	CE

PRODUCT DETAIL

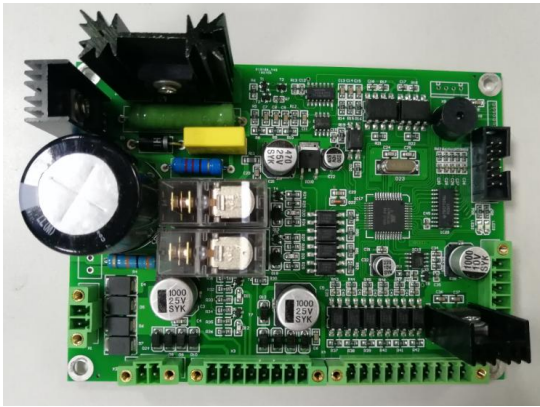
LCD Control Panel, clearly shows each phase of the mixing process.



Overheating protection for shaking motor.



Electronic board with high technology.



Simple electrical structure



Isolated mechanical movement, ensure running stably with low noise.



Safety electric-magnetic lock.



PACKING

